

- In addition to routine checks for each use, PPE should regularly undergo a detailed inspection by a competent person. Petzl recommends an inspection every 12 months and after any exceptional event in the life of the product.
  - PPE inspection should be conducted with the manufacturer's Instructions for Use.
- Download the instructions at [PETZL.COM](https://www.petzl.com).



## JAG SYSTEM

### 1. Known product history

Any PPE showing unexpected degradation should be quarantined, pending a detailed inspection.

The user should:

- Provide precise information on the usage conditions.
- Report any exceptional event regarding his PPE.

(Examples: fall or fall arrest, use or storage at extreme temperatures, modification outside manufacturer's facilities...).

### 2. Preliminary observations

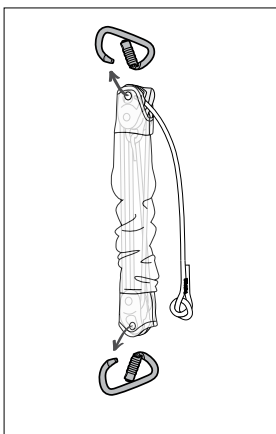
Verify the presence and legibility of the serial number and the CE mark.

Verify that the product lifetime has not been exceeded.

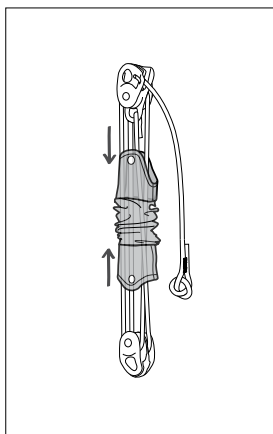
Compare with a new device to verify there are no modifications or missing parts.

### 3. Removing the connectors and the cover

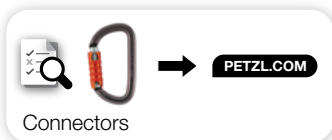
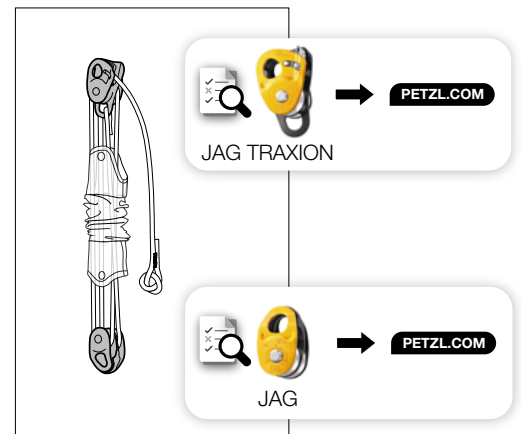
- Remove the connectors and inspect them using the corresponding inspection procedure.



- Collapse the cover.

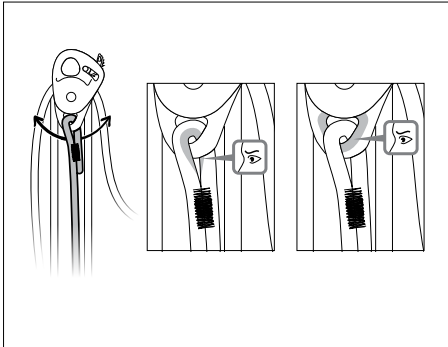


- Inspect JAG and JAG TRAXION using the corresponding inspection procedures.

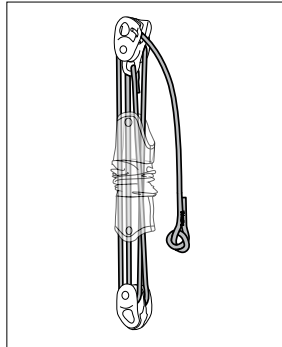


#### 4. Inspecting the rope

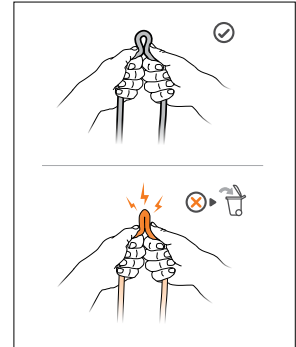
- Check the condition of the sewn loop on the JAG TRAXION.  
Move this loop to inspect the hidden parts of the JAG TRAXION attachment hole.



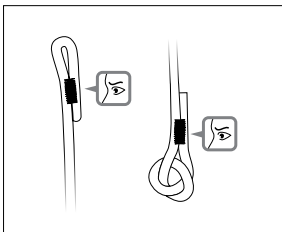
- Check the condition of the sheath over the full length of the rope (cuts, wear, burns, fuzzy areas or signs of chemical products...).



- Do a tactile inspection of the core along the full length of the rope (hard spots, swelling, soft or crushed areas...).

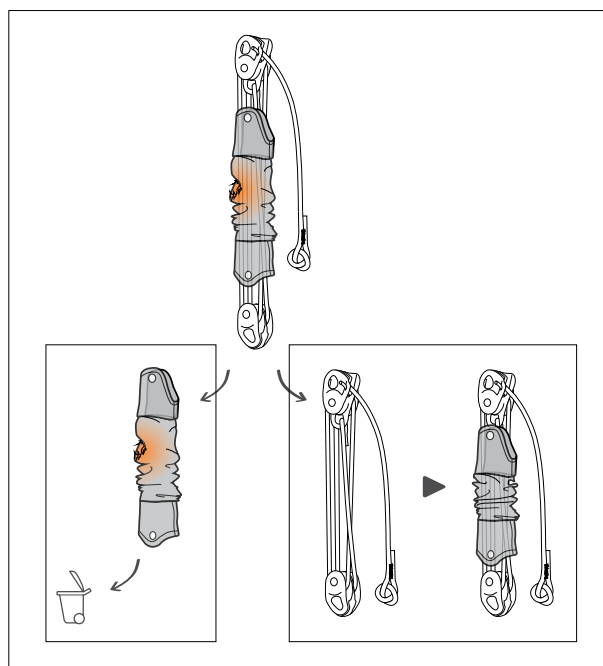


- Check the stitching. Make sure there are no cut, torn, loose, or worn threads.



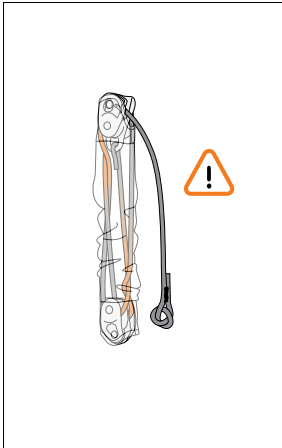
#### 5. Inspecting the cover

- If necessary, remove the cover and replace it with a JAG SYSTEM replacement cover.

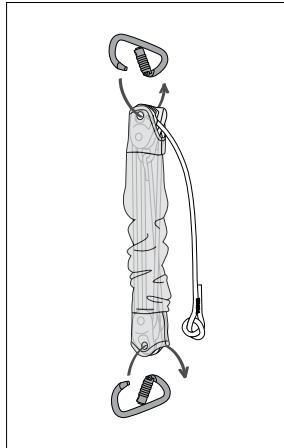


## 6. Installing the connectors

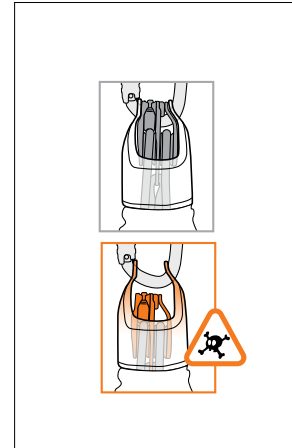
- Check that the rope is not tangled before reassembling the system.



- Reinstall the connectors.



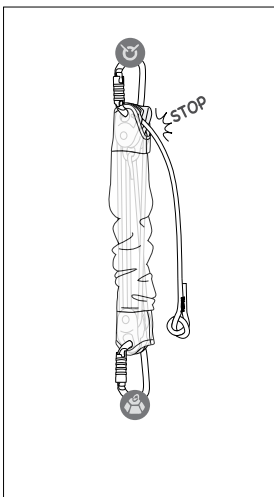
- Verify that the connectors are correctly positioned in the JAG and JAG TRAXION attachment holes.



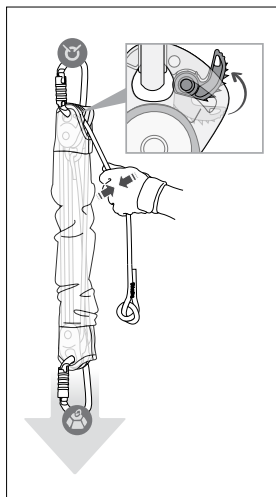
## 7. Function check

Install your JAG SYSTEM on an anchor at low height, with a light load.

- Verify that the system locks under load.



- Verify that the JAG TRAXION can be deactivated for a short descent.



- Verify that the load can be hauled.

